

# FURNISHING SCHEDULE

LIBRARY - 368.7 SF.

| TAG | FURNITURE                 | QUANTITY | AREA      |
|-----|---------------------------|----------|-----------|
| 1   | TEACHER DESK w/ CHAIR     | 16.0 X 1 | 16.0 SF.  |
| 2   | STUDENT'S TABLE (24"X48") | 8.0 X 3  | 24.0 SF.  |
| 3   | STUDENT'S CHAIR           | 1.2 X 12 | 14.4 SF.  |
| 4   | STORAGE UNIT (36"x24")    | 6.0 X 1  | 6.0 SF.   |
| 5   | 4 DWR. LAT FILE (42"x18") | 5.3 X 1  | 5.3 SF.   |
| 6   | BOOKSHELVES (96 LF.)      | -        | 41.3 SF.  |
| TB  | TACK BOARD                | 4.0 X 6  | -         |
|     | TOTAL                     |          | 107.0 SF. |

# AREA CALCULATIONS

LIBRARY

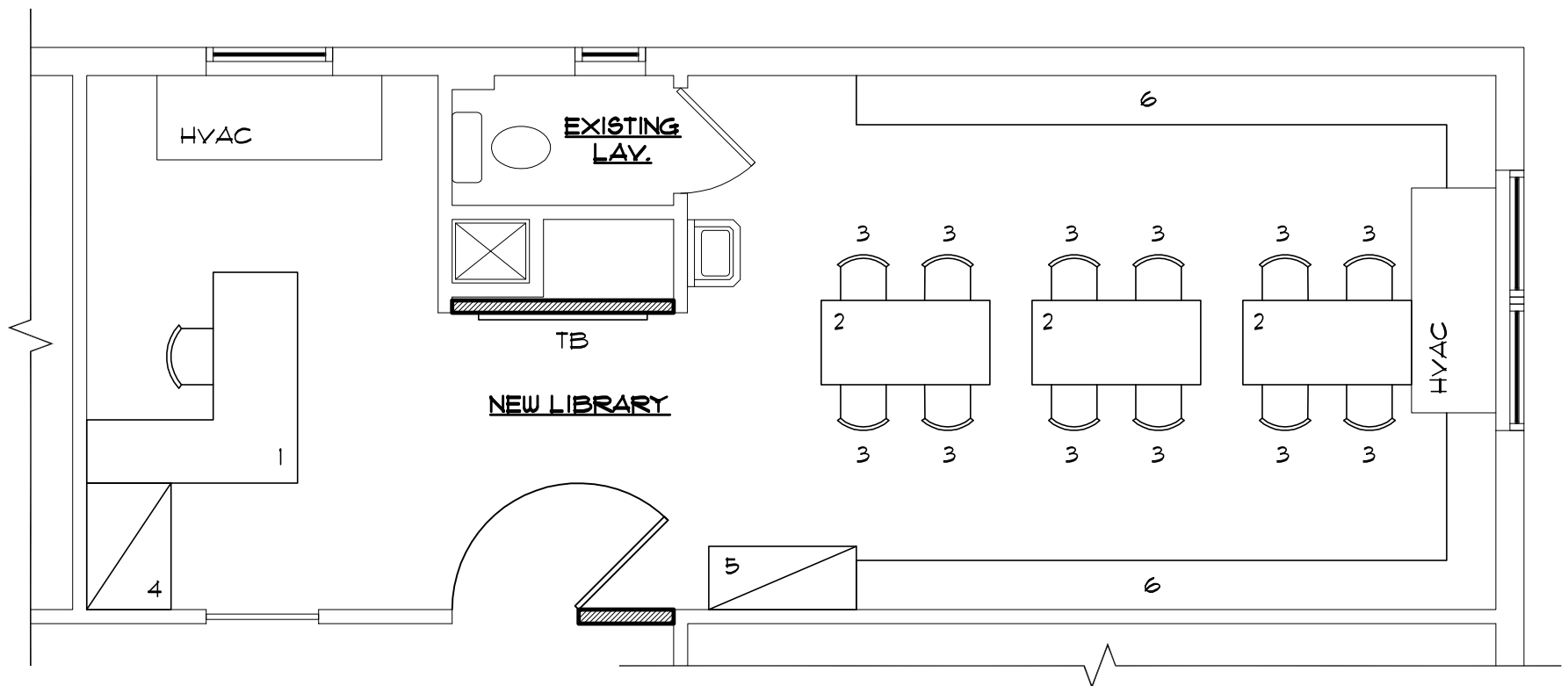
|                           |          |
|---------------------------|----------|
| FURNISHINGS               | 107.0 SF |
| OCC. X NET SF = (12+1)x20 | 260.0 SF |
| <hr/>                     |          |
| REQUIRED AREA             | 367.0 SF |
| PROVIDED AREA             | 368.7 SF |

\_\_\_\_\_  
 Laura Agin  
 Board President

\_\_\_\_\_  
 Date

\_\_\_\_\_  
 Karen L. Bilbao  
 Superintendent of Schools

\_\_\_\_\_  
 Date



## PROPOSED FLOOR PLAN

SCALE: 1/4" = 1'-0"

|             |           |
|-------------|-----------|
| COMM. NO.:  | 1004.0935 |
| DATE:       | 07-15-09  |
| SCALE:      | AS NOTED  |
| DRAWN BY:   | CWJ       |
| CHECKED BY: | AFT       |

GREGG S. SONNENFELD, AIA  
 NJ A110817

ANDREW F. TROCCHIA JR., AIA  
 NJ A110887

Architecture  
 Planning  
 Project Management

**SONNENFELD  
 AND TROCCHIA**  
 ARCHITECTS, P.A.

53 Main Street  
 Holmdel, NJ 07733

Tel 732.946.7777  
 Fax 732.946.7474  
 www.sonnenfeldandtrocchia.com

## FAIRVIEW ELEMENTARY SCHOOL RENOVATIONS

230 COOPER ROAD  
 RED BANK, NEW JERSEY

TITLE:  
 FURNITURE PLAN

SHEET:

**A-1**