

Science

Adaptation and Google Expeditions

Students can go on a Virtual Expedition to the Borneo Rainforest. Once there, they will see real animals and plants living in their natural habitat. Students can observe the multiple adaptations each species has to survive in its own environment.

[Adaptations Lesson Plan](#)

Design challenges, connected to the NJSLs are available for your classes. Please contact your school's STEM Specialist.

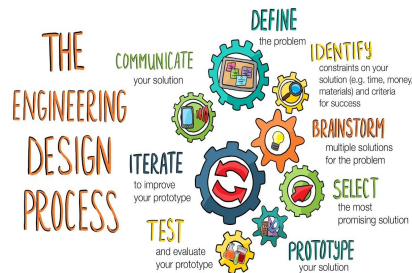


Step Into

STEM

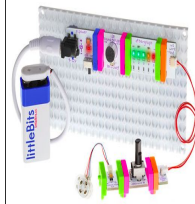


Science • Technology • Engineering • Math



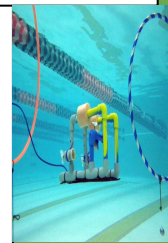
Little Bits Hit the Maker Space!

The middle schools have a designated Maker Space set up with Little Bits pieces. Students visit during their lunch time to tinker and create innovative designs.



STEM Club Has Begun!

STEM Clubs are up and running in all three middle schools. Students are preparing to participate in the SeaPerch competition at Rowan University again this year, on March 24th. Wish your STEM teams good luck!



Family Engineering Night

As a part of ongoing efforts in community engagement, the middle schools all participated in their own Family Engineering Nights. Students and family members participated in three different engineering design challenges.



Engineering Resources Spotlight

Turn Lesson Plans into Games
[Classcraft Quest](#)
Performing Arts Boost STEM
[Arts and STEM Connection](#)
New Updates for STEMscopes
[STEMscopes New Updates](#)



Mathematics

Big Ideas & STEM

Big Ideas is being piloted in each grade and it offers STEM videos to introduce each new topic. The STEM Specialists and Math Coaches have been meeting to develop STEM lessons that align to the Big Ideas program. A bank of lessons is also being developed.
[Big Ideas and STEM Challenges](#)

Middle School STEM Specialists

[Bayshore](#)
Jason Clarkson
X 2610

[Thompson](#)
Jeanette VanFechtman
X 8776

[Thorne](#)
Kristen Parry
X 7741